

STUDY OPTIONS AT UQ

UQ offers coursework and research postgraduate programs, as well as overseas study opportunities and language courses.



POSTGRADUATE STUDY OPTIONS

UQ offers you a number of pathways to postgraduate study, and you can choose from coursework or research programs.

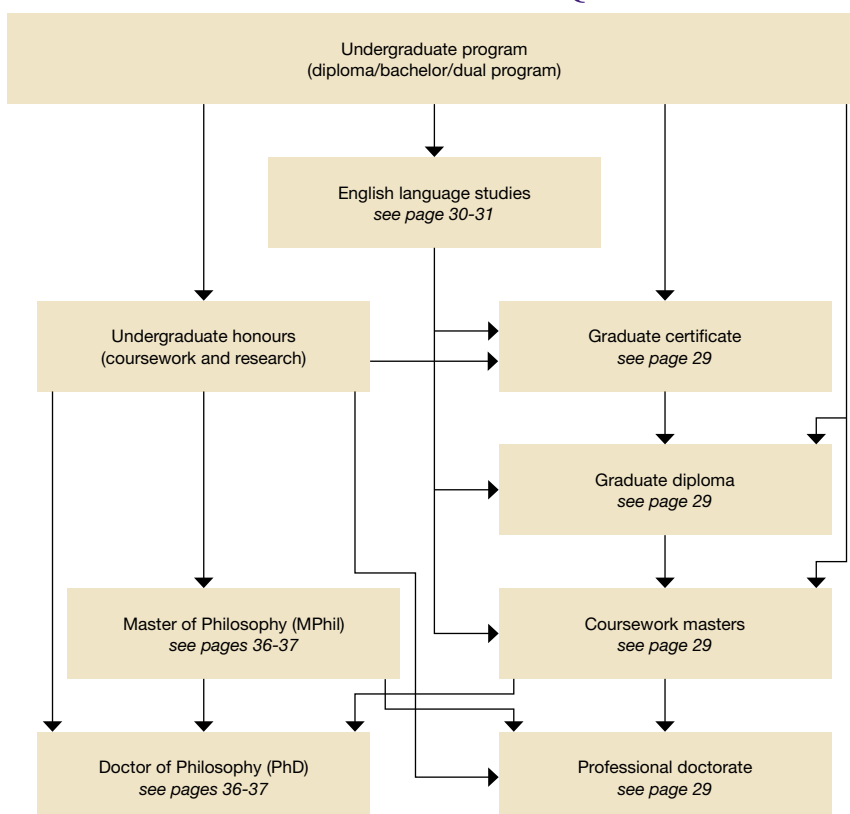
Postgraduate study at UQ falls under two main categories: coursework programs and research higher degrees (RHD).

Postgraduate coursework programs involve mostly coursework, although there may be research options available.

Research higher degrees require that at least two-thirds of the program is supervised independent research (a thesis). Some limited coursework may be required.

A variety of other opportunities are available for postgraduate students, either coursework or RHD, such as exchanges to international universities and language study options.

PATHWAYS TO AND THROUGH UQ



“Having done my masters degree program at UQ, the level of academic and personal support available at UQ have led me to further pursue research here. Faculty members are experienced, helpful and friendly and working with colleagues who come from all over the world gives me a great opportunity to share our diverse perspectives and to understand our cultural backgrounds.”

MAYUKO INAGAWA, JAPAN
(PHD IN APPLIED LINGUISTICS)



Deputy Vice-Chancellor (Academic) Professor Deborah Terry with students

COURSEWORK PROGRAMS

Postgraduate coursework programs include graduate certificates, graduate diplomas, coursework masters, and professional doctorates.

See pages 39-90 for listings and information about all of UQ's postgraduate coursework programs.

Graduate certificates, graduate diplomas, and masters (by coursework) programs are frequently available in progression or individual programs under a wide range of disciplines. Depending on a student's background, they may enter a masters program directly, or be asked to apply for a graduate certificate, then progress to a graduate diploma, then to a coursework masters.

Most coursework masters programs consist of a series of specialist courses in a structured class or seminar format. A research component is usually required, but it is shorter than that required in a research masters program.

See pages 39-90 for entry requirements for specific coursework programs.

Teaching and learning styles

Courses taught at UQ use a range of teaching methods, including lectures, tutorials, laboratory practicals, fieldwork, group discussions, flexible delivery, and online teaching.

Emphasis is placed on understanding and applying concepts and theories, and being able to critically examine different arguments and viewpoints. Students are encouraged to actively participate in class discussions and to ask questions if they do not understand.

It is not considered bad manners for students to express personal viewpoints. In fact, many lecturers deliberately provoke discussion and argument to encourage thought and debate.

In order to meet assignment and examination requirements, students are expected to spend as much time on library research and independent study as they do attending lectures and tutorials.

Student Services offers individual assistance and group workshops throughout the semester for students wishing to develop their learning, assignment writing, researching, examination, and time-management skills.

Student Services

www.uq.edu.au/student-services

Assessment

Assessment methods vary according to the course.

These methods can include written assignments, mid-semester and end-of-

semester examinations, individual and group projects, research reports, and laboratory practical reports. Individual course assessment requirements are set out in course profiles (outlines) available online for students at the start of semester and are typically described to students in the first lecture. Continued progression of study depends on students' academic results and is considered by each faculty at the end of each semester.

There is a strong emphasis on written expression in most forms of assessment. Good speaking and writing skills are prerequisites of successful study, and are developed throughout the duration of study at UQ. Academic performance is usually graded according to a seven-point scale:

- 7 – High Distinction
- 6 – Distinction
- 5 – Credit
- 4 – Pass
- 3 – Fail
- 2 – Fail
- 1 – Fail

Students can find out more about the University's assessment processes at Orientation (see page 18).

Commencement

Semester 1 in Australia generally begins in late February, and Semester 2 in late July. Programs with earlier commencement dates are noted in the Programs information on pages 39-90. Please see the 2011 Academic Calendar on the inside front cover for commencement dates.

New international students are advised to arrive one week before the English for Specific Purposes: Academic Communication Skills (ESP: ACS) program or Academic Preparation Program (APP) if they plan to attend either of these programs. They should arrive at least two weeks before Orientation (see page 18), in order to get over jet lag, attend the *Getting Started* session (see page 18), and settle into housing. After a student is settled, they will be able to get maximum benefit from the varied Orientation information and social activities.

Full-time study

A standard load is eight units (#8) per semester. To ensure program completion within visa duration, the University strongly recommends that all students undertake a load of #8 units (typically four courses) each semester.

Postgraduate study

www.uq.edu.au/study

RESEARCH HIGHER DEGREES

In Australia, a research higher degree (RHD) is the academic entry qualification to academic and professional research careers.

UQ offers two RHD programs: Doctor of Philosophy (PhD) and Master of Philosophy (MPhil). Previous research experience is fundamental to admission to RHD. Most commonly, undergraduate and coursework masters degrees with a significant research component provide an academic basis for eligibility to RHD programs. The PhD takes three to four years and the MPhil one to two years to complete.

The UQ Graduate School administers the MPhil and PhD programs, awards scholarships for RHD, oversees submission and examination of theses and provides a range of services to promote graduate study at UQ.

See pages 35-38 for more detailed information about RHD programs at UQ, including admission information, scholarships and funding, and commencement times.

Graduate School

www.uq.edu.au/grad-school



Team leader and cognitive scientist Professor Wiles will use a \$3.3 million grant to build a new generation of robots that can learn about their physical spaces based on animal navigation skills.

ENGLISH LANGUAGE STUDIES

UQ offers a number of English language courses to help you succeed in university study, or to advance your career prospects at home or abroad.

ENGLISH LANGUAGE STUDIES

Students wishing to improve their English language and related academic study skills can undertake intensive English language and academic communication courses at the University's Institute of Continuing & TESOL Education (ICTE-UQ).

Courses can be taken as either independent studies or prior to a UQ degree program.

ICTE-UQ also offers English language support to UQ international students with confirmed degree enrolment before and during their degree studies at no additional cost.

About ICTE-UQ

ICTE-UQ courses are delivered in new, purpose-built premises with state-of-the-art audio-visual and computing facilities, Learning Centre and multimedia laboratories on the UQ St Lucia campus.

ICTE-UQ has a large and diverse student population with an average sessional enrolment of more than 600 students from over 40 countries and an average of 15-16 students per class.

ICTE-UQ language teachers are qualified, experienced and have diverse educational and teaching backgrounds.

Student services include airport reception, homestay accommodation as well as a range of cultural, tourist and sporting activities.

ICTE-UQ is government-registered and accredited by the National ELT Accreditation Scheme (NEAS) and is an approved International English Language Testing System (IELTS) and Cambridge ESOL Teaching Knowledge Test (TKT) administration centre for Brisbane.

English teacher training, customised professional development and short-course academic group programs are also available on request.

Institute of Continuing & TESOL Education (ICTE-UQ)

www.ictc.uq.edu.au
Email tesol.enrol@ictc.uq.edu.au
Phone + 61 7 3346 6770
ICTE-UQ CRICOS Provider No 00091C

ICTE-UQ English language training courses

COURSE	LEVELS	CAMPUS	ENTRY REQUIREMENTS	DURATION	2010 TUITION FEE (AUD\$)*
General English (GE)	7 levels (elementary to advanced)	St Lucia	None	5, 10, 15, 20, 25, 30, 35, 40, 45 weeks	\$355 per week
English for Academic Purposes (EAP) – specialised language and academic study skills needed for tertiary study.	I	St Lucia	IELTS 5 (no score less than 5.0)	5 weeks (January only), 10 or 20 weeks	\$355 per week
	II	St Lucia	IELTS 5.5 (no score less than 5.5)	5 weeks (January only), 10 or 20 weeks	\$355 per week
	II	Ipswich	IELTS 5.5 (no score less than 5.5)	5 weeks (January only), or 10 weeks (May)	\$355 per week
English for Specific Purposes: Bridging English Program (ESP:BEP) – an English language pathway to UQ degree studies. Students who successfully meet all ESP:BEP exit requirements do not need to sit an IELTS test to gain entry to their UQ degree.	Advanced	St Lucia	For UQ programs requiring IELTS 6.5 (W6) / IBTOEFL 90 (W21): IELTS 6.0 (no score less than 5.5) / IBTOEFL 83 (no score less than 19)	10 weeks	\$3900 (ten week course)
			For UQ programs requiring IELTS 7.0 (sub-bandscores as specified): ESP:BEP entry requirements determined on a case-by-case basis		
English for International Business Communication (EIBC) – communication skills for careers or further studies in international business and related areas.	I	St Lucia	IELTS 5.0 (5 in speaking and writing)	5, 10, 15 or 20 weeks	\$355 per week
	II	St Lucia	IELTS 5.5 (5.5 in speaking and writing)	5, 10, 15 or 20 weeks	\$355 per week
Advanced English Communication Skills (AECS) – challenges advanced learners to further develop fluency and communication skills, particularly speaking and listening.	Advanced	St Lucia	IELTS 5.5 (6 in speaking and listening, 5 in reading and writing)	5, 10 weeks	\$355 per week
English for Specific Purposes: Teaching of English to Speakers of Other Languages (ESP:TESOL) – develops English language skills of non-native English speakers who are either interested in learning more about TESOL or who are practising English teachers.	I	St Lucia	IELTS 5.0 (5 in speaking and writing)	5 weeks	\$355 per week (plus TKT test fee \$72 per module)
	II	St Lucia	IELTS 5.5 (5.5 in speaking and writing)	5 weeks	\$355 per week (plus TKT test fee \$72 per module)
English for Specific Purposes: Tourism & Hospitality (ESP:T&H) – develops English language skills for work in tourism, travel and hospitality industries.	I	St Lucia	IELTS 5.0 (5 in speaking and writing)	5 weeks	\$355 per week
	II	St Lucia	IELTS 5.5 (5.5 in speaking and writing)	5 weeks	\$355 per week

*a non-refundable enrolment fee of AUD\$200 applies to all enrolments. 2010 fees provided as a guide only. 2011 fees will be available from ICTE-UQ from mid-2010.



ICTE-UQ students

English language pathways to UQ degree programs

To qualify for admission to UQ degree programs students must meet minimum English language proficiency requirements. These requirements are detailed on page 105.

Students who do not meet the minimum English proficiency requirements for their UQ degree may be issued with a Package Offer consisting of a period of English language study at ICTE-UQ and their principal UQ program (package offers will only be issued where the only outstanding requirement for UQ admission is English).

Eligible students may apply for a Package Offer that includes the ESP:BEP. Students who successfully meet all ESP:BEP exit requirements do not need to sit an IELTS test to gain entry to their UQ degree. ESP:BEP English entry and course completion requirements are detailed in the table below.

An alternative pathway to the ESP:BEP is a Package Offer consisting of GE or EAP study. Students who undertake this pathway are required to take an IELTS (or TOEFL) test at the completion of their ICTE-UQ program to demonstrate that they meet the English language proficiency requirements for UQ degree program entry.

OSHC Fees

ICTE-UQ students coming to Australia on a student visa are required to purchase Overseas Student Health Cover (OSHC). More information about OSHC and fees is available on page 95 or from www.ictc.uq.edu.au

Enrolment

An English language studies enrolment form (purple) is included at the back of this prospectus.

ESP:BEP English language entry and exit requirements for UQ degree program entry

UQ DEGREE PROGRAM ENGLISH LANGUAGE PROFICIENCY REQUIREMENT	ESP:BEP ENGLISH LANGUAGE ENTRY REQUIREMENT	ESP:BEP EXIT REQUIREMENTS FOR UQ DEGREE PROGRAM ENTRY
IELTS 6.5 (minimum 6.0 in writing) OR IBTOEFL 90 (minimum 21 in writing)	IELTS 6.0 (no sub-band score less than 5.5) OR IBTOEFL 83 (no skill score less than 19)	ESP:BEP completion with minimum overall grade of 4 (minimum Satisfactory Achievement in all 4 skills) and minimum 80% attendance

For more information on ESP:BEP entry and exit requirements for UQ degree programs with an English language proficiency requirement other than IELTS 6.5 (min 6.0 in writing) / IBTOEFL 90 (min 21 in writing), visit: www.ictc.uq.edu.au/englishcourses/bridgingenglishprogram.htm

Homestay and airport reception fees

HOMESTAY	FEE (AUD\$)
Placement fee	\$225
Weekly fee	\$225
Instalment fee	\$50
Airport Reception (Brisbane International/Domestic Airport)	\$99

Fees listed are for 2010. Homestay and airport reception fees for 2011 will be available from ICTE-UQ from mid-2010.

ICTE-UQ course dates

2011 SESSION DATES	GE, EIBC, AECS, ESP:TESOL, ESP:T&H	EAP	ESP:BEP
10 January-11 February	5 weeks	5 weeks	
21 February-25 March	5 weeks	10 weeks	
28 March-29 April	5 weeks	10 weeks	10 weeks (28 March-3 June)
9 May-10 June	5 weeks	10 weeks	
14 June-15 July	5 weeks	10 weeks	
25 July-26 August	5 weeks	10 weeks	
29 August-30 September	5 weeks	10 weeks	
10 October-11 November	5 weeks	10 weeks	10 weeks
14 November-16 December	5 weeks		

Public holidays: 3 January, 26 January, 22 April, 25 April, 2 May, 13 June, 17 August, 26-27 December. The deadline for confirmation and payment for all the above courses including the ESP:BEP is six weeks prior to the program commencement date. ICTE-UQ can not guarantee that places will be available after this date.

How long do I need to study English?

CURRENT SCORE		ESTIMATE OF WEEKS TO REACH IELTS SCORE REQUIRED					
IELTS	TOEFL PAPER/IBT	5.0	5.5	6.0	6.5	7.0	
3.0	377/25	40+	45+	45+	45+	45+	
3.5	425/38	30	40	45+	45+	45+	
4.0	450/45	20	30	40	45+	45+	
4.5	477/53	10	20	30	40	45+	
5.0	500/61	-	10	20	30	40	
5.5	530/71	-	-	10	20	30	
6.0	557/83	-	-	-	10	20	
6.5	577/90	-	-	-	-	10	

The information above is a guide only and is based on average student progress.

English support courses for UQ International students (no additional cost to student)

COURSE	CAMPUS	ENTRY REQUIREMENTS	DURATION
English for Specific Purposes: Academic Communication Skills (ESP:ACS) – delivered prior to Orientation each semester to provide students with specialist academic study and communication skills	St Lucia	Confirmed unconditional acceptance into a UQ degree program	3 weeks (full-time)
English for Academic Communication (EAC) – support classes provided throughout the semester for students who require assistance with their English communication and academic study skills	St Lucia (Ipswich & Gatton subject to demand)	Confirmed enrolment in a UQ degree program	8 weeks (24 hours total tuition on a part-time basis)

OTHER STUDY OPPORTUNITIES

Exchange studies at UQ, short-term study opportunities and a range of language courses offer different perspectives on your field of study and create new career and academic possibilities.

STUDY ABROAD

International students currently enrolled at accredited overseas universities may be eligible to study at The University of Queensland for one or two semesters under the Study Abroad program.

Credit gained at UQ is in most cases transferable to a student's degree at their home university.

Study Abroad tuition fees are AUD\$9750 per semester regardless of the number of courses taken. A standard full-time study load for one semester at UQ is eight units (which usually equates to four courses).

Please visit www.uq.edu.au/studyabroad for further information.

Eligibility criteria

Academic eligibility

To meet the academic eligibility requirements, students must:

- have completed at least one full-time year of study at an accredited university
- be enrolled at an accredited university
- have average to above-average results in university studies to date
- meet specific course prerequisites for admission into certain courses.

English language requirements

Students must meet the English language proficiency requirements outlined on page 105.

EXCHANGE TO UQ

International students currently enrolled at accredited overseas universities may be eligible to study at The University of Queensland for one or two semesters if their university has an exchange agreement with UQ.

See page 110 for a list of overseas universities that hold exchange agreements with UQ.

Credit gained at UQ is usually transferred towards a student's degree at his or her home university.

Students pay tuition fees to their home university.

Eligibility criteria

Academic eligibility

To meet the academic eligibility requirements, students must:

- have completed at least one full-time year of study at an accredited university
- be enrolled at an accredited university
- be nominated by their home university
- meet specific course prerequisites for admission into certain courses
- have average to above-average results in university studies to date.

English language requirements

Students must meet the English language proficiency requirements outlined on page 105.

For more information about exchange programs with The University of Queensland, students should contact the International Exchange Office at their home university.

Study Abroad and Student Exchange Office

www.uq.edu.au/studyabroad
www.uq.edu.au/studyabroad/contact-us

EXCHANGE FROM UQ – UQ ABROAD

The UQ Abroad program offers students enrolled at UQ the exciting experience of studying overseas for one semester on exchange, while gaining credit toward their UQ degree.

The program is an ideal way to combine study and travel. In addition to the adventure of discovering a new culture first-hand, or improving foreign language skills, students broaden their career and academic opportunities and gain a different perspective on their studies. Studying overseas is a rewarding experience, and helps students build self-confidence, increase self-awareness and establish a worldwide network of friends.

The University of Queensland has exchange agreements with more than 150 universities in 31 countries (see page 110). Under the exchange, tuition fees at the host university are waived. Students continue to be enrolled and pay fees at UQ and are responsible for their own airfares, accommodation, personal insurance and living costs.

UQ offers a number of scholarships to both international and Australian students going on exchange.

UQ Abroad

www.uq.edu.au/uqabroad
www.uq.edu.au/uqabroad/contact-us



UQ Abroad student Jillian Mellor outside the Louvre Museum in Paris

LEARN A LANGUAGE AT UQ

The Institute of Modern Languages (IML) is a centre in UQ's Faculty of Arts at the St Lucia campus. It offers courses in more than 30 languages, from Arabic to Vietnamese, at beginner to advanced levels. International students who want to make the most of this opportunity to learn another language are welcome to enrol.

IML's flexible time schedule and dedicated tutors ensure that students not only gain valuable language skills but also receive an exciting cultural experience.

IML language courses use a communicative approach to teaching and learning. All four skill areas are covered: listening, speaking, reading, and writing, for application in authentic situations.

There are no formal entry requirements for IML courses. IML courses are not accredited to UQ programs.

Translation, interpreting, and cross-cultural briefings on Australian culture and language are also available on a fee-for-service basis.

Institute of Modern Languages
www.iml.uq.edu.au
 Email iml@uq.edu.au
 Phone +61 7 3346 8200



English language students at UQ

TERMINOLOGY

Definitions of some common University terms.

Academic advisor

Academic advisors advise students on course selection, careers and opportunities for postgraduate studies. Academic advisors are located in faculty or school offices. Your faculty office can assist you in finding the appropriate advisor.

Advisor

All research higher degree students have at least two advisors (supervisors) who guide their research project and mentor their development.

Alumni

Whether you studied here for a semester on exchange or completed a full degree, when you enrol at the University, you automatically become a part of the UQ alumni community.

Australian student

A student who is an Australian citizen or permanent resident, or a New Zealand citizen.

Campus

The location/s where the program is conducted. UQ has four main campuses: St Lucia, Ipswich, Gatton and Herston. Some programs are taught at other locations, or across more than one campus.

Census date

The last date to cancel enrolment in a course without incurring financial liability for the course. The census dates are March 31 for Semester 1, and August 31 for Semester 2. The census date for Summer Semester is set annually based on the start date. Intensive teaching periods have individual census dates which are set each year based on the start date of the teaching period.

Compulsory courses

Courses which must be studied to complete the requirements of a program.

Course (formerly known as subject)

A component of study within a program, similar to a subject at school.

Coursework program

The Commonwealth Department of Education, Employment & Workplace Relations (DEEWR) defines a coursework program, as distinct from a research higher degree, as a program where the assessable content by research represents less than two-thirds of the total assessable content.

Credit

1. A student receives credit towards a degree when a course which is part of the program requirements is passed.
2. Students changing programs (within UQ or from another university) may apply for credit, a value assigned for study completed in one program, towards the new program. See "Credit transfer".

Credit transfer (or transfer credit)

Credit transfer may be granted when students change from one program to another, if the rules of the new program allow. For assistance, consult the faculty administering the new program.

CRICOS code

The Commonwealth Register of Institutions and Courses for Overseas Students (CRICOS) code indicates a registered program offered to international students studying in Australia on a student visa.

Doctor of Philosophy (PhD)

Research higher degree program usually undertaken over a period of three to four years. The program includes a research thesis involving at least two-thirds of the work for the degree. Entry requires prior research training equivalent to a UQ bachelors degree with a minimum of honours class IIA.

Domestic student

See Australian student.

Elective

A course that students may choose from a set of options. Some UQ programs allow elective courses to be taken from outside the main focus of the program or from other UQ programs.

Exchange from UQ (UQ Abroad)

A program where students enrolled at UQ may be eligible to study in another country under UQ's student exchange program, UQ Abroad. See page 32.

Exchange to UQ

A program where students at approved overseas universities study at UQ for a semester or two as part of their home university degree. See page 32.

External student

External students studying by distance education are not required to attend any on-campus classes, although attendance at residential schools may be required in some cases. Material is dispatched to students by mail or via the Web. International students can only study external programs from offshore.

Faculty

The major organisational unit within UQ, with responsibility for academic programs. Faculties may have a number of sub-faculty academic units called schools.

Grade Point Average (GPA)

A statistic based on grades received and the number of units completed. It is an indicator of the success of students in their studies.

Graduate Certificate

A postgraduate tertiary qualification usually requiring one semester of study. Completion of an undergraduate program is normally required for entry to a graduate certificate.

Graduate Diploma

A postgraduate tertiary qualification usually requiring one year of study. Completion of an undergraduate program is normally required for entry to a graduate diploma.

Graduate entry

Indicates options available for some programs, which are only open to students who have already completed an undergraduate degree.

Honours

Some undergraduate programs require an additional year of advanced or more specialised study for students to be awarded an honours degree. Other programs calculate honours based on overall performance in specific years of the program.

Intensive

A flexible delivery study mode where students attend for short periods (ie. one to two weeks on-campus).

Internal student

A student who attends classes on-campus during semester.

International student

A student who is not an Australian citizen or permanent resident, nor a New Zealand citizen, and is enrolled or proposes to enrol at an institution in Australia. Temporary residents of Australia are classified as international students.

Master of Philosophy (MPhil)

Research higher degree program undertaken over a period of one to two years. The program includes a research thesis involving at least two-thirds of the work for the degree. Entry requires prior research training equivalent to a UQ bachelors degree.

Masters by Coursework

Postgraduate program typically requiring one to two years (or two to four semesters) full-time study. Programs consist of a series of specialist courses and sometimes a research component.

Plan/Field (also known as a major)

A plan is an area of study within a program, for example, biology, physics, mathematics or history.

Postgraduate Administrator

Academic staff member in a school who is delegated by the Head to manage all research higher degree matters. Contact the Postgraduate Administrator for advice about research projects and supervision, and to apply for admission. Postgraduate Administrators provide advice on administrative procedures, progress, and problems.

Prerequisite

Some postgraduate coursework programs require prerequisite undergraduate study to ensure students can manage program content.

Professional Doctorate

Coursework program which allows experienced professionals to return to study to improve their professional practice through the application of research to current problems and issues.

Professional memberships

Professional organisations, associations, institutes and societies to which a student or a graduate of a particular program may be qualified to join.

Program (formerly known as course)

A sequence of study leading to the award of a qualification such as a bachelors degree, graduate diploma or certificate.

Program code

A unique identifying number assigned by the University to a program.

Program duration

Refer to Workloads.

Research higher degree

The Commonwealth Department of Education, Employment & Workplace Relations (DEEWR) defines a research higher degree, as distinct from a coursework program, as a program where the assessable content by research represents more than two-thirds of the total assessable content.

Scholarship

A sum of money or other aid granted to a student, based on merit or need, to help students pursue their studies.

School

The core, sub-faculty academic unit, responsible for teaching, research and interaction with professional organisations. Course coordinators and lecturers generally work in schools.

Semester

The University teaching year is divided into three semesters: Semester 1, Semester 2 and Summer Semester. Most programs only require students to be enrolled in Semesters 1 and 2 each year.

Study Abroad

A program where students enrolled at an overseas university study at UQ for one or two semesters as part of their home university degrees. See page 32.

Unit

Units (#) represent the value of individual courses that contribute to the total unit requirement of an academic program. A standard study load is 8 units per semester.

Visa duration

Refer to Workloads.

Workloads

International students are required to complete their studies within the minimum duration of the program (student visa duration). To achieve this, the University strongly recommends that all students undertake a load of #8 units (typically four courses) each semester.

UQ terminology

www.uq.edu.au/study/terminology.html