

**Visit to the Antiquities Museum, University of Queensland
Review Worksheet
MYTHOLOGY**

Myth, the transmission of mythological stories, and the depiction of characters from myth were vital elements in the lives of the ancients.

Locate the vase below, and answer the questions.



What is the acquisition number of the vase, and what is it called?

Which mythological story is being retold?

How might you identify who the figures depicted are?

The symbol on the cup below is known as a Gorgoneion (head of the Gorgon or Medusa). It represents one of the female monsters from Greek myth who, it was reputed, had a head of snakes and would turn anyone who gazed on her to stone. The symbol was often used on artefacts as a means of warding off evil, or enabling it to be reflected away from the viewer. Locate the cup below, and write its acquisition number.



Locate another Gorgoneion in the Museum, this time made of terracotta. Write down its acquisition number and describe the differences between the two depictions.

ARTEFACT MANUFACTURE



What kind of stone is the sculpture above made from? _____

Do you think it is a hard or soft stone? Justify your answer. (Clue: take note of the presence or absence of markings which might indicate the hardness of the stone).



What material is the lamp on the left made from? _____

Lamps such as these were made using the artefact on the right. What is the term for this technique? _____

Locate another lamp made from a different material. What is its acquisition number and what material is it made from? _____

DEPICTIONS OF DEITIES



1. _____



2. _____

Locate the two artefacts above and give their acquisition numbers. Which goddess is represented?

Judging by the symbols common to both artefacts, what are the attributes of this goddess?

DEVELOPMENT OF POTTERY

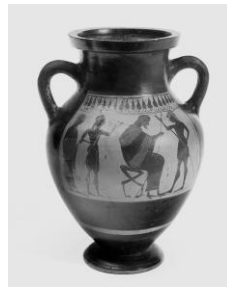
Look at the pottery vessels in the cabinet closest to the coins. Identify one which has been made by hand, and then one manufactured on a pottery wheel. Write down their acquisition numbers, and detail how you can tell the differences in the manufacture, taking especial note of identifying marks on the vessels.

Acquisition Number: 1. _____ 2. _____

Differences in Manufacture:

In the Museum there are examples of Geometric, Black Figure, and Red Figure style pottery. Locate the following three pots. Identify each one according to the styles above, and then write down the differences in how the pots are decorated.

Style: 1. _____ 2. _____ 3. _____



Differences in styles:

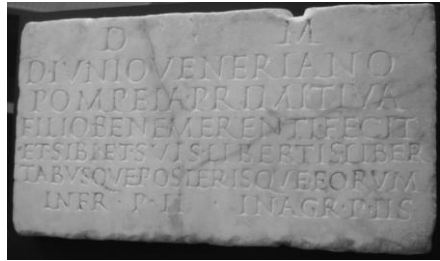
GLASSWARE

Glass-blowing was invented in the early Roman Imperial period, most likely in Syria. Prior to this glass was made by pouring molten glass into moulds, or around a core which was removed after cooling. Locate a glass vessel which has been made using this technique, and give its acquisition number _____



How does it differ in style and colour from blown glass vessels such as the one above?

WRITING IN ANTIQUITY



The artefact above is an example of writing which has been incised on stone. Locate the piece, and identify the language in which it was written.

Acquisition number: _____ Language: _____

Identify three other examples of writing on artefacts made of three different kinds of material, and fill in the following.

Acquisition number	Material	Language

ORNAMENTATION

Where was the earring shown below made, and what material is it manufactured from? _____



Locate another artefact of ornamentation in the Museum, and write down its acquisition number, function and the material it was manufactured from.

ARTEFACT OF GREATEST INTEREST

Locate an artefact in the Museum which has been of the greatest interest to you. Identify its acquisition number, and note down what it is about the artefact which captured your attention. Describing it in detail will help you look at it closely.
